

ROTARY VALVES 2 & 3 WAY

G.. F..

A range of rotary valves 15mm to 150mm suitable for diverting or mixing water in closed circuit heating applications.

Media temperature 2°C to 110°C
In open circuits ie mains water, cooling towers etc. mineral deposits will impair the operation.

The position of the shoe is always in the same direction as the flat on the spindle.



F.. valves flanged to PN6

Material :

3MG.. Brass
G.. & F.. Cast iron body,
Brass shoe,
Stainless Steel spindle.

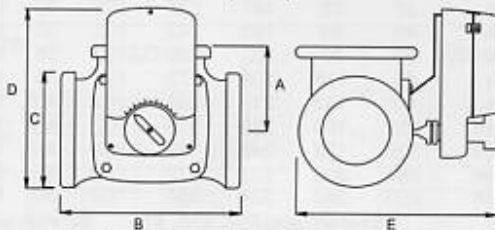
The valve can be installed with the spindle at any angle vertical to 30° above the horizontal plane.
All leakage rates are measured at a differential pressure of 0.5 Bar.

Type	Size	Max Diff Press Bar	Kvs m ³ /h	Leakage % Mixing	Kvs Diverting	Max. Static Pressure	4Nm	Select Motor 8Nm	16Nm	Spring Return
3MG15-25	15mm ½" BSP	2	2.5	<1.5%	<0.03%	10 Bar	EK4..	E08..	E16..	ER16..
3MG20-4	20mm ¾" BSP	2	4	<1.5%	<0.03%	10 Bar	EK4..	E08..	E16..	ER16..
3MG20-63	20mm ¾" BSP	2	6.3	<1%	<0.03%	10 Bar	EK4..	E08..	E16..	ER16..
3MG25-8	25mm 1" BSP	2	8	<1%	<0.03%	10 Bar	EK4..	E08..	E16..	ER16..
3MG25-12	25mm 1" BSP	2	12	<1%	<0.01%	10 Bar	EK4..	E08..	E16..	ER16..
3MG32-18	32mm 1¼" BSP	2	18	<1%	<0.01%	10 Bar	EK4..	E08..	E16..	ER16..
3G20	20mm ¾" BSP	1	8	<1%	<0.5%	6 Bar	EK4..	E08..	E16..	ER16..
3G25	25mm 1" BSP	1	12	<1%	<0.5%	6 Bar	EK4..	E08..	E16..	ER16..
3G32	32mm 1¼" BSP	1	18	<1%	<0.5%	6 Bar	EK4..	E08..	E16..	ER16..
3G40	40mm 1½" BSP	1	28	<1%	<0.5%	6 Bar	EK4..	E08..	E16..	ER16..
3G50	50mm 2" BSP	1	44	<1%	<0.5%	6 Bar	EK4..	E08..	E16..	ER16..
3F50	50mm 2" Flanged	0.5	60	<1%	<0.5%	6 Bar		E08..	E16..	ER16..
3F65	65mm 2½" Flanged	0.5	90	<1%	<0.5%	6 Bar		E08..	E16..	ER16..
3F80	80mm 3" Flanged	0.5	150	<1%	<0.5%	6 Bar		E08..	E16..	ER16..
3F100	100mm 4" Flanged	0.5	225	<1%	<0.5%	6 Bar			E16..	ER16..
3F125	125mm 5" Flanged	0.5	280	<1%	<0.5%	6 Bar			E16..	ER16..
3F150	150mm 6" Flanged	0.5	400	<1%	<0.5%	6 Bar			E16..	ER16..

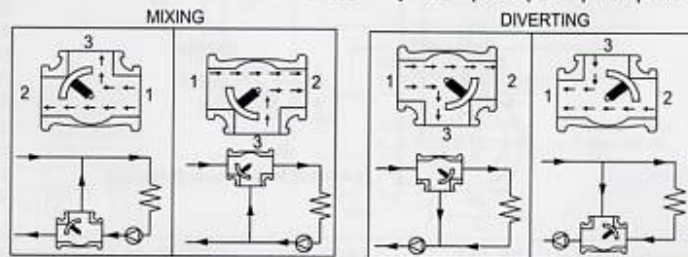
ORDER VALVE + LINKAGE + MOTOR - SEE DATA SHEET ON MOTORS.

For 2 ports - blank the middle port - reduce ΔP

DIMENSIONS:	VALVE	A	B	D	E	VALVE	A	B	D	E	VALVE	A	B	C	D	E
	3MG15-25	36	72	185	163	3G20	52.5	105	185	183	3F50	97.5	195	140	215	236
	3MG20-4	36	72	185	163	3G25	54	108	185	183	3F65	100	200	160	225	246
	3MG20-63	36	72	185	163	3G32	57.5	115	185	183	3F80	120	240	190	235	273
	3MG25-8	36	72	185	165	3G40	60	120	185	192	3F100	132.5	265	210	245	295
	3MG25-12	44	88	185	180	3G50	78	156	190	204	3F125	150	300	240	275	316
	3MG32-18	44	88	185	180						3F150	175	350	265	305	337



Dimensions D & E are for E08.. E16.. motors only
D & E will be less for EK4.. & more for ER16..



The motor can operate between ports 3-2 or 3-1

ACCESSORIES:

EE-2MB Linkage for Satchwell MB valve - use E08.. & E16.. motors ONLY
EE-2MBF Linkage for Satchwell MBF valve - use E16.. motors ONLY

EE-1ESB Linkage Kit - use EK4.. motors ONLY
EE-2ESB Linkage Kit - use E08.. & E16.. motors ONLY
EE-4ESB Linkage Kit - use ER16.. motors ONLY

FLOW CHARTS:

